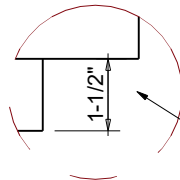
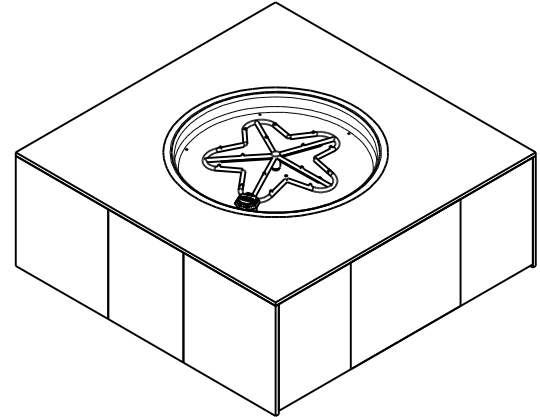
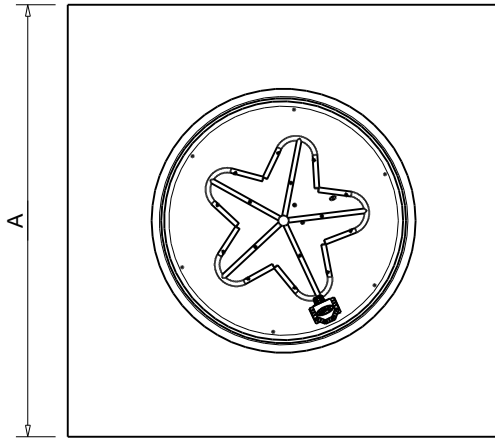




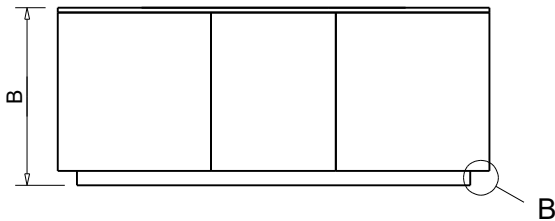
Hearth Products Controls Co
FIRE PIT INSERT CSA CERTIFIED-OUTDOOR USE ONLY
FOR COMMERCIAL AND RESIDENTIAL USE

HEARTH PRODUCTS CONTROLS
2225 LYONS RD.
MIAMISBURG, OH 45342
TOLL FREE: 877.585.9800
PHONE: 937.436.9800
www.hpcfire.com

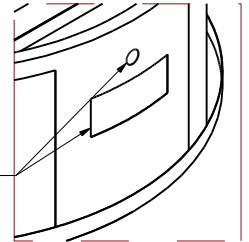


Detail B

VENTING TO BE CLEAR OF
DEBRIS AND ANY FINISHING
MATERIAL



FRAME IS PRE-CUT FOR FPPK OR
MLFPK BUT NOT HARDIBOARD



ELECTRONIC IGNITION (EI)						
PART NUMBERS	STND BTU	TOR- BTU	DIMENSION CHART		POWER	INSERT
			A"	B"		
U45S/25SSCEK	125K	125K	45	18	120VAC OR 24VAC	PENTA25EI
PUSH BUTTON/FLAME SENSING (FPPK)						
PART NUMBERS	STND BTU	TOR- BTU	DIMENSION CHART		POWER	INSERT
			A"	B"		
U45S/FPPK25CEK	125K	125K	45	18	AA BATTERY	PENTA25FPPK
MATCH LIT (MLFPK)						
PART NUMBERS	STND BTU	TOR- BTU	DIMENSION CHART		POWER	INSERT
			A"	B"		
U45S/MLFPK25CEK	65K	65K	45	18	-	PENTA25MLFPK

EI MODELS INCLUDE: ENCLOSURE,
FULLY ASSEMBLED INSERT, INPUT
FLEX LINE AND INSTRUCTIONS

FPPK MODELS INCLUDE:
ENCLOSURE, FULLY ASSEMBLED
INSERT, MOUNTING SLEEVE AND
INSTRUCTIONS

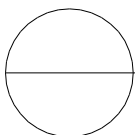
MLFPK MODELS INCLUDE:
ENCLOSURE, FULLY ASSEMBLED
INSERT AND INSTRUCTIONS

INSERT: 25" BOWL PAN, 18" PENTA BURNER

*ADD TOR- FOR ANY TORPEDO VERSIONS

Notes:

1. CONSTRUCTION - .065 MILD STEEL WELDED FRAME AND 1/2" CEMENT BOARD SHELL AND WEIGHS 150 LBS.
2. ALL ENCLOSURES INCLUDE FULL OPEN VENTING ALONG BOTTOM. ADEQUATE DRAINAGE IS NEEDED.
2. FOLLOW ALL MANUFACTURER INSTALLATION INSTRUCTIONS AND LOCAL CODES.
3. ALL DIMENSIONS ARE CONSIDERED TRUE AND REFLECT MANUFACTURER'S SPECIFICATIONS AS OF THE REVISION DATE.
4. DO NOT SCALE DRAWING.
5. THESE DRAWINGS ARE FOR SIZING AND PLANNING PURPOSES. ALL INFORMATION CONTAINED HEREIN WAS CURRENT AT THE TIME OF DEVELOPMENT. THE MANUFACTURER'S RESPONSIBLE FOR THE ACCURACY OF THE DRAWING.
6. CONTRACTOR'S NOTE: FOR PRODUCT AND COMPANY INFORMATION VISIT www.CADdetails.com/info
REFERENCE NUMBER 771-063.



READY TO FINISH SERIES
SQUARE ENCLOSURE