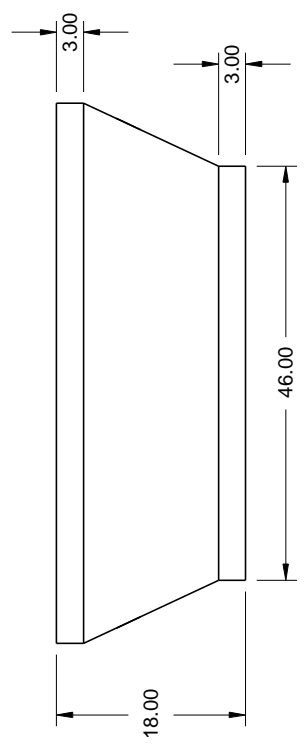
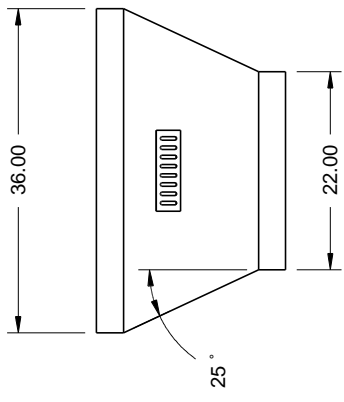
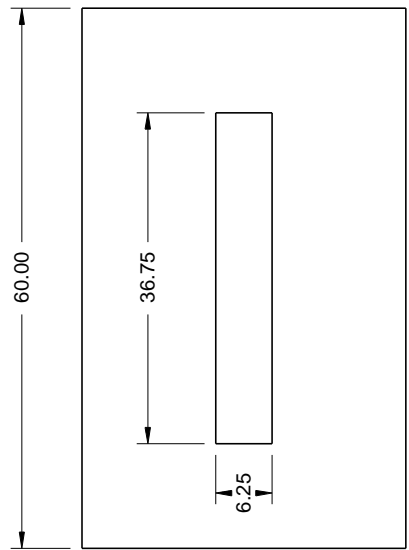
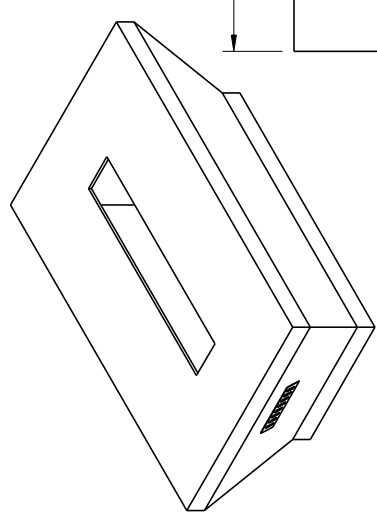


REVISIONS				
ZONE	REV	DESCRIPTION	DATE	APPROVED



Material:
 22G Galvanized Steel Structure
 1/2" Hardiboard shell

Additional info:
 Weighs 150 lbs.
 Optional 19" cut out for 19" Pan
 304 Stainless steel vents
 Open bottom

Do not pre-cut surface material. Only cut surface material after enclosure is on-site. HPC is not responsible for surface material that cracks or fails due to heat.	DRAWN	DATE
	Mike Chaffins	2/5/2015
	CHECKED	
	QA	
	MFG	
	APPROVED	

FPE60X36TAP

Hearth Products Controls Co

SIZE	FSCM NO.	DWG NO.	REV
A			
SCALE		SHEET	