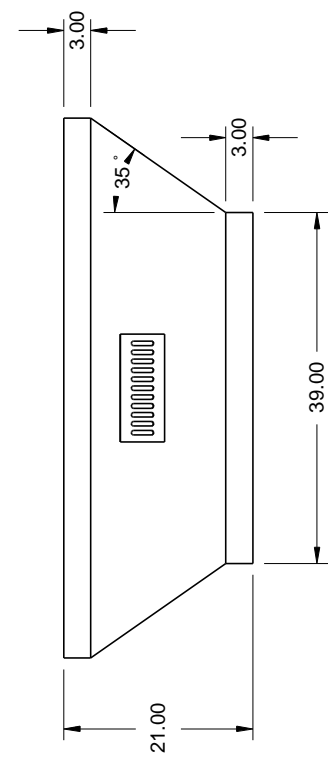
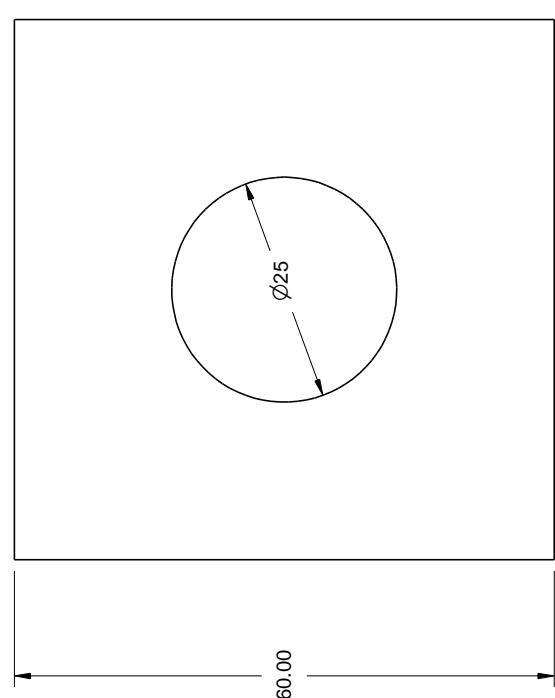
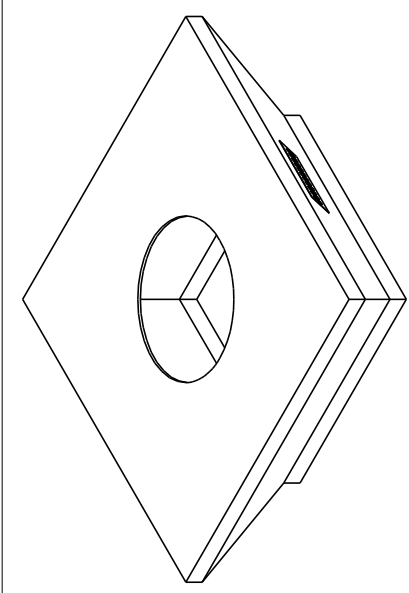



REVISIONS				
ZONE	REV	DESCRIPTION	DATE	APPROVED



Material: 22G Galvanized Steel Structure 1/2" Hardboard shell	Material: 22G Galvanized Steel Structure 1/2" Hardboard shell	DRAWN	DATE	FPE60SQUARETAP	
		Mike Chaffins CHECKED	2/5/2015		
Additional info: Weighs 150 lbs. Optional 19" cut out for 19" Pan 304 Stainless steel vents Open bottom	Do not pre-cut surface material. Only cut surface material after enclosure is on-site. HPC is not responsible for surface material that cracks or fails due to heat.	QA		 Hearth Products Controls Co	
		MFG		SIZE A	DWG NO.
		APPROVED		SCALE	SHEET