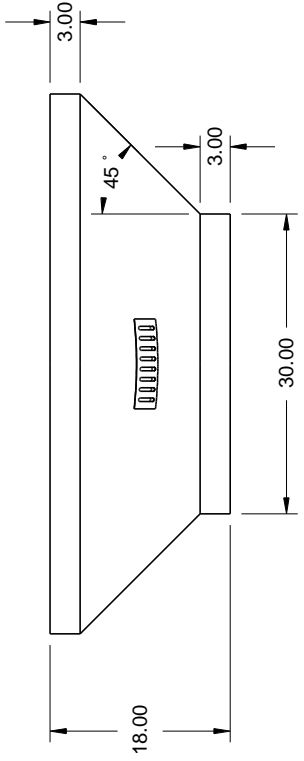
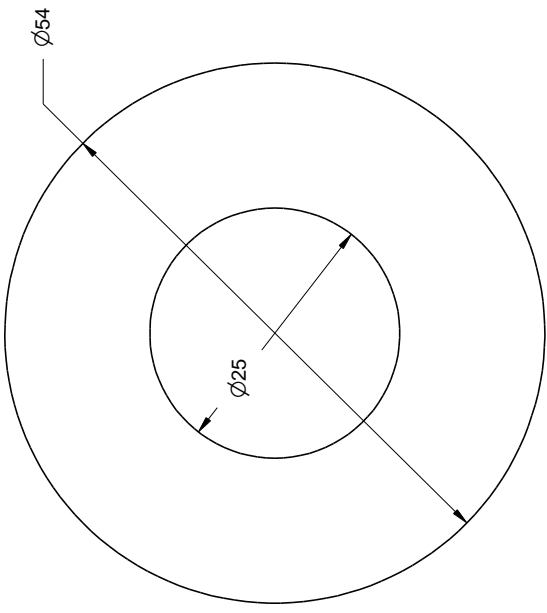
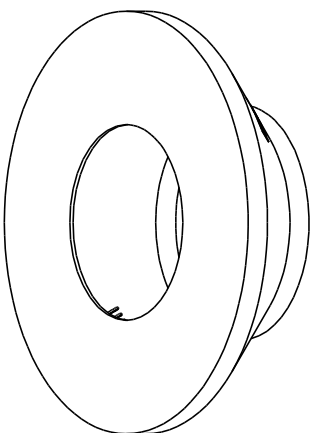


REVISIONS				
ZONE	REV	DESCRIPTION	DATE	APPROVED



**Material:**  
 22G Galvanized Steel Structure  
 1/2" Hardboard shell

**Additional info:**  
 Weighs 150 lbs.  
 Optional 19" cut out for 19" Pan  
 304 Stainless steel vents  
 Open bottom

Do not pre-cut surface material. Only cut surface material after enclosure is on-site. HPC is not responsible for surface material that cracks or fails due to heat.	DRAWN	Mike Chaffins	DATE	2/5/2015
	CHECKED			
	QA			
	MFG			
APPROVED				

# FPE54-ROUNDTAP

**Hearth Products Controls Co**

SIZE	FSCM NO.	DWG NO.	REV
<b>A</b>			
SCALE			SHEET